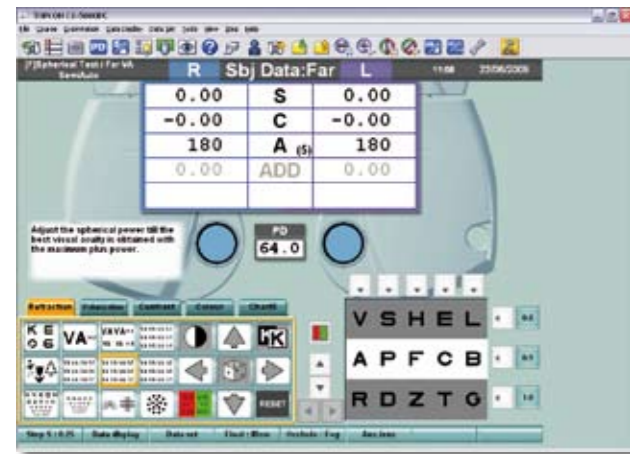


## A range of operation options are available for CC-100XP



CV-5000 PC operation window

Operation can be done by Topcon's dedicated CV-5000 automated phoropter in combination with KB-50 operation panel or CV-5000PC operation software.

Both combinations offer full functionality and the charts displayed by CC-100XP are displayed in either KB-50 or CV-5000PC operation software.

Both systems allow operation of CC-100XP without the need of the dedicated remote control.



CV-5000 optical head



KB-50 operation panel

The remote control, offers easy operation and full functionality of CC-100XP



## Specifications CC-100XP

<b>Testing distance</b>	2.9 - 6.1 m, step size: 0,2m		
<b>Viewing area W x D (mm)</b>	437 x 293		
<b>Visual acuity range / steps</b>	Decimal: 0.05 to 2.0		
	LogMar: 1.3 to -0.30		
	Snellen (m): 120 to 3		
	Snellen (f): 400 to 10		
	Monoyer: 0.5 to 2.0		
<b>ISO 8596 compliant VA test</b>	Landolt C		
<b>ISO 8597 compliant VA test</b>	Letters	Numbers	Tumbling E
<b>Other VA tests</b>	3 Children / illiterate charts	ETDRS	Monocular R/G
	Half clock fan	Astigmatism	
<b>Binocular tests</b>	Schober	Worth 4 dots	Horizontal coincidence
	Vertical coincidence	Duochrome balance	Indicator
	Double indicator	VA balance	Fixation disparity
	Stereo triangle 20	Stereo triangle 11	Stereo valenz 20
	Stereo valenz 11	Stereo test	Differential Stereo
	Vertical OXO - like	Horizontal OXO - like	Random dot (Topcon)
	Random dot (Stages)	Cowen	
<b>LCD Display</b>			
<b>Dimensions W x H x D (mm)</b>	578 x 430 x 58		
<b>Contrast ratio</b>	10 000 : 1		
<b>Weight (kg)</b>	7		
<b>Main Voltage</b>	AC 110 - 240 V; 50-60 Hz		
<b>Power consumption</b>	120 Watt		

## Accessories



Remote control (optional)



Virtual remote control (optional)



Wall mount (optional)



Special Polaroid filters for trial frames (standard)



**IMPORTANT** Subject to change in design and/or specifications without advanced notice.  
In order to obtain the best results with this instrument, please be sure to review all user instructions prior to operation.

**Topcon Europe Medical B.V.**  
Essebaan 11; 2908 LJ Capelle a/d IJssel; P.O. Box 145;  
2900 AC Capelle a/d IJssel; The Netherlands  
Phone: +31-(0)10-4585077; Fax: +31-(0)10-4585045  
E-mail: medical@topcon.eu; www.topcon.eu

**Topcon Danmark**  
Præstemarksvej 25; 4000 Roskilde; Danmark  
Phone: +45-46-327500; Fax: +45-46-327555  
E-mail: info@topcondanmark.dk  
www.topcondanmark.dk

**Topcon Scandinavia A.B.**  
Neongatan 2; P.O. Box 25; 43151 Mölndal; Sweden  
Phone: +46-(0)31-7109200; Fax: +46-(0)31-7109249  
E-mail: medical@topcon.se; www.topcon.se

**Topcon España S.A.**  
HEAD OFFICE; Frederic Mompou, 4;  
08960 Sant Just Desvern; Barcelona, Spain  
Phone: +34-93-4734057; Fax: +34-93-4733932  
E-mail: medical@topcon.es; www.topcon.es

**Topcon Italy**  
Viale dell'Industria 60;  
20037 Paderno Dugnano, (MI) Italy  
Phone: +39-02-9186671; Fax: +39-02-91081091  
E-mail: topconitaly@iscali.it; www.topcon.it

**Topcon S.A.R.L.**  
HEAD OFFICE; 89, rue de Paris; 92585 Cligny; France  
Phone: +33-(0)1-41069494; Fax: +33-(0)1-47390251  
E-mail: topcon@topcon.fr; www.topcon.fr

**Topcon Deutschland GmbH**  
Hans-Martin-Schleyer Strasse 41;  
D-47877 Willich; Germany  
Phone: +49-2154-885-0; Fax: (+49) 2154-885-177  
E-mail: med@topcon.de; www.topcon.de

**Topcon Portugal**  
Rua da Forte, 6-6A; L-022; 2790-072  
Carnaxide; Portugal  
Phone: +351-210-994626; Fax: +351-210-938786  
www.topcon.pt

**Topcon Polska Sp. z o.o.**  
ul. Warszawska 23; 42-470 Siewierz; Poland  
Phone: +48-(0)32-670-50-45; Fax: +48-(0)32-671-34-05  
www.topcon-polska.pl

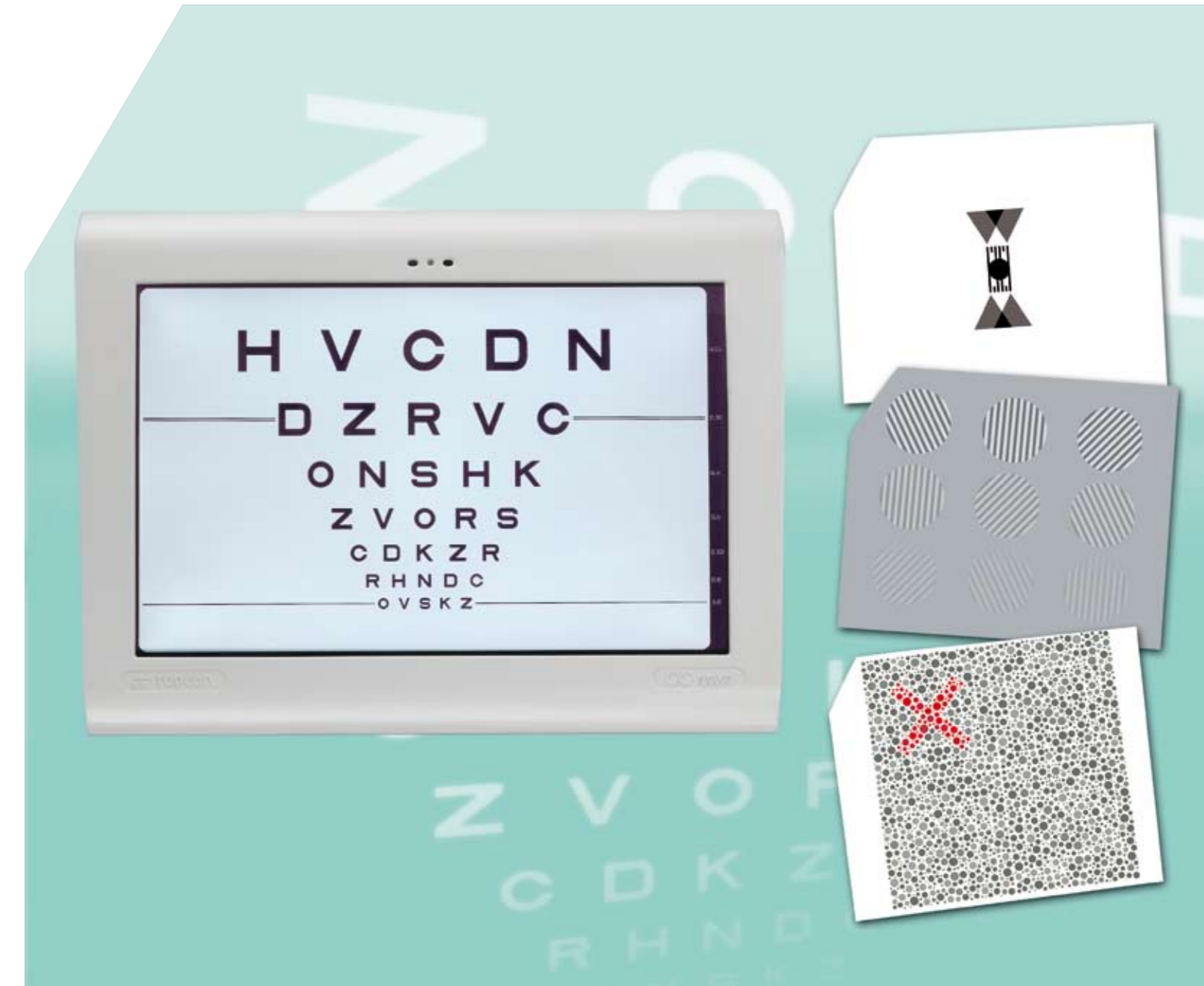
**Topcon (Great Britain) Ltd.**  
Topcon House; Kennet Side; Bone Lane; Newbury  
Berkshire RG14 5PX; United Kingdom  
Phone: +44-(0)1635-551120; Fax: +44-(0)1635-551170  
E-mail: info@topcon.co.uk; www.topcon.co.uk

**Topcon Ireland**  
Unit 276; Blanchardstown; Corporate Park 2  
Ballycoolin; Dublin 15; Ireland  
Phone: +353-18975900; Fax: +353-18293915  
E-mail: medical@topcon.ie; www.topcon.ie



TOPCON CORPORATION 75-1 Hasunuma-cho, Itabashi-ku, Tokyo 174-8580, Japan. Phone: 3-3558-2523/2522 Fax: 3-3960-4214 www.topcon.co.jp

# Computerized Chart System CC-100XP



Item code: 5250431 / printed in Europe / 08\_09



CONNECTING VISIONS

# Your personal test chart LCD

## CC-100XP

Topcon is proud to present the latest development in high tech LCD test charts; Topcon CC-100XP. CC-100XP is provided with a 22 inch wide screen, high resolution, high contrast and high brightness LCD display. The contemporary design of CC-100XP fits into every modern eye care practice and matches the smooth design of Topcon ophthalmic instruments. CC-100XP can be controlled by dedicated Topcon CV-5000 automated phoropter, by dedicated remote control or PC driven virtual remote control. CC-100XP automatically scales the test charts to the distance set by the operator.



## CC-100XP

CC-100XP offers most of the commonly used visual acuity tests, like Letters, Tumbling E, Landolt C and Numbers as well as 3 different Children charts. Image separation for binocular testing is created through a specific Polarization technique, which is unique for LCD test charts. This unique Polarization technique provides 100% image separation, leaving no "ghost image"; a significant improvement compared to all conventional Polarized LCD chart systems currently available on the market.

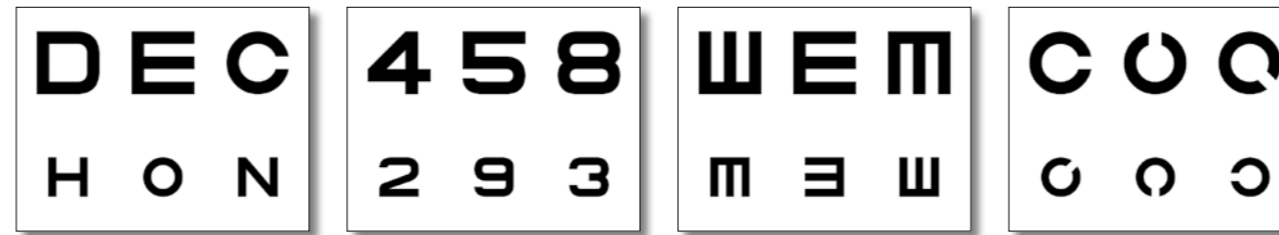
Conventional LCD test chart systems also display different background colors when Polarization lenses are in use; a phenomenon that is elaborated by Topcon CC-100XP. Additional to the commonly used visual acuity tests CC-100XP provides numerous charts and tests for further, extended screening purposes. A unique feature is the availability of the Spatial Frequency Contrast Sensitivity Test which provides quantitative and qualitative information about the patients contrast visual acuity.



Ghost images and different background colors in conventional LCD chart systems

100% separation and equal background in Topcon CC-100XP

## Available standard visual acuity charts in CC-100XP

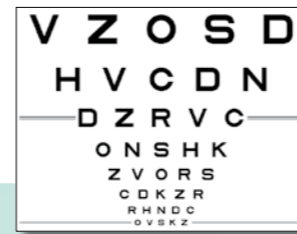


VA charts available in characters

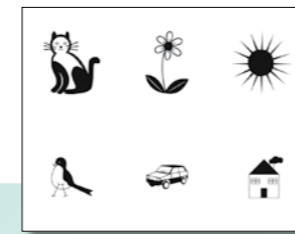
Numbers

Tumbling E

Landolt C

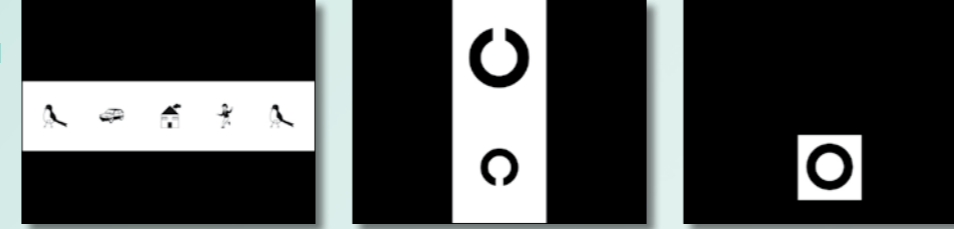


ETDRS chart (2)



Illiterates and children charts

Masking is available for horizontal (row), vertical (column) and single characters.



## MKH test sequence according to Haase

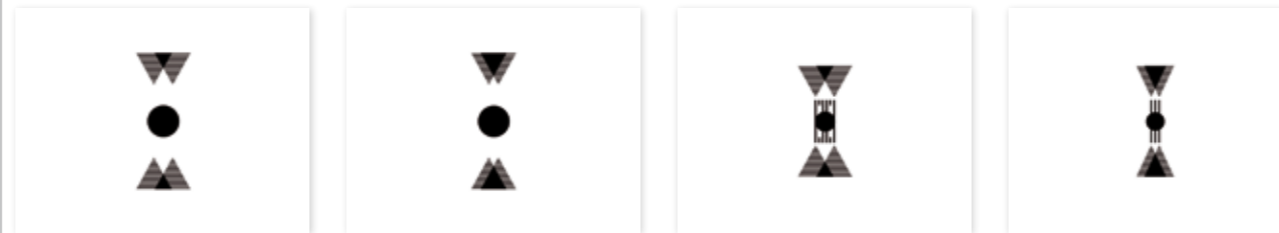


Cross

Indicator

Double indicator

Coincidence

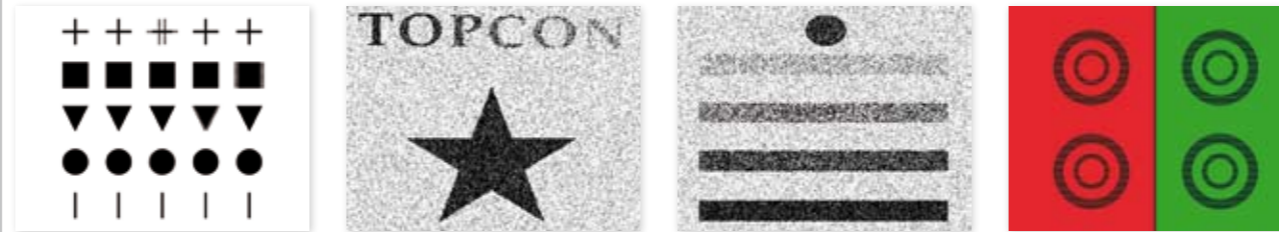


Stereo triangle

Reduced stereo triangle

Stereo Valence

Reduced Stereo Valence



Differential stereo

Random dot Topcon

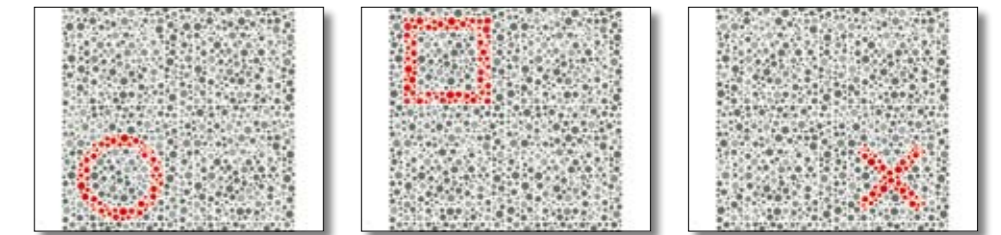
Random dot Stages

Cowen

MKH test sequence is available in CC-100XP for functional optometry testing

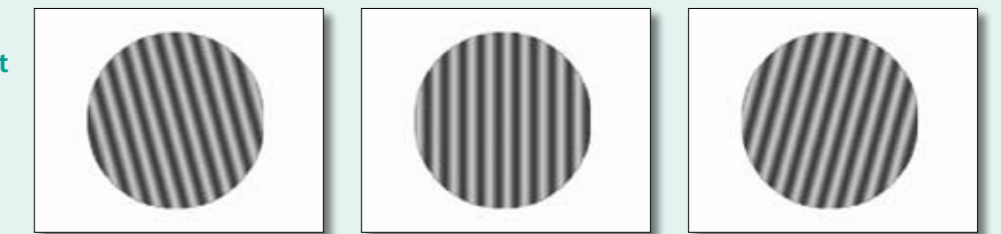
## Further tests available within CC-100XP

### Pseudo-Isochromatic Color Vision Test



The Pseudo-Isochromatic test is based on the well-known Ishihara test, but providing better quantitative data on color vision deficiencies. CC-100XP displays the results in an easy to understand graph which is printable as well.

### Spatial Frequency Contrast Sensitivity Test



The Spatial Frequency Contrast Sensitivity Test can be customized by setting the amount of spatial frequencies and contrast levels. The result gives valuable information on the patients contrast visual acuity. Test results are displayed in a graph which is printable as well.

### CC-100XP hardware features

#### Light sensor

The light sensor senses the examination room light level and indicates whether or not this light level needs adjustment in order to achieve the best test results.

#### White Maddox LED

The white Maddox LED provides a small light source, extremely well fitted for Maddox testing. All conventional LCD chart systems provide the Maddox Light within the LCD display itself, which is either too big or not bright enough to perform proper Maddox testing.

#### WiFi connection

CC-100XP is equipped with WiFi connection to send data to a PC for the virtual remote control or WiFi printer to print test results (Pending).

#### USB connection

CC-100XP provides USB connection to a printer to print test results.

